



PERFECT SYNTHESIS OF
IMAGINATION AND REALITY



ABOUT US

Located in "The National High-Tech Industry Development Zone" in Zhuhai China, Siger is a professional company dealing with R&D and manufacturing of clinical dental equipments.

Scientific innovation is Siger's core competence. Tens of scientific results has been approved as national patents, by those Siger manufactured the every first fully digitally controlled dental unit in China, which reaches the leading international technological standard.

Siger products have been fully recognized and highly valued by the professionals and users from home and abroad. At present, large quantities of Siger dental units has been installed and used in a lot of specialist hospitals in China and exported to 70 nations and districts globally. Siger is doing really well especially in the high end market of West Europe.

It is always Siger's ultimate goal to create first class brand, manufacture superb products and providing excellent services.

PERFECT SYNTHESIS OF
IMAGINATION AND REALITY

- Analog electronics control system
- Built-in intelligent simultaneous fuction
- Inter-locking system and anti-backflow mechanism
- Multifuntional foot pedal control system
- Comprehensive protection mechanism



SIGER U200

STANDARD CONFIGURATION:

- Swing-type/ hanging-type dentist element
- Touch control panel for dentist
- Built-in intraoral X-ray film viewer
- Two 4-holes tubings for turbine
- One 4-holes tubing for air motor
- One 3-way syringe for detist
- Touch control panel for assistant
- One 3-way syringe for assistant
- One hydraulic saliva ejector
- One pneumatic HV suction
- Patient chair of U200 type(Synchronized design)
- Multifunctional headrest
- Left armrest
- Balance arm with air lock system
- Multifunctional foot-pedal with program memory
- LED operating light
- Rotatable/detachable hygienic ceramic spittoon
- Distilled water system
- Cup filling system with warm water
- Dentist stool

SIGER U200

DENTIST ELEMENT

Touch control panel

5 sets of intelligent memory positions can be set in advance. And the control of the chair position, operating light, cup filling and bowl rinsing can be done with one button.

The inter-locking system of the dynamic instruments can greatly prevent the injury and improve the efficiency of dentists.

The on and off of all the dynamic instruments are controlled by photoelectric sensors.



ERGONOMIC DESIGN

The synchronized design between the seat and backrest of patient chair guarantees excellent movement compensation.

A safety cut-outs stops the patient chair and backrest from moving down in the presence of obstacles. The chair or backrest will move up a little bit to avoid unexpected harm.



EASILY CARRY OUT BY MULTIFUNCTIONAL FOOT PEDAL:

Automatical access to preset chair position

Automatical access to preset spittoon position

Automatic ON/OFF of operating light

Automatic spittoon rinse

Intelligent return to the previous position

Adjustable chair positions

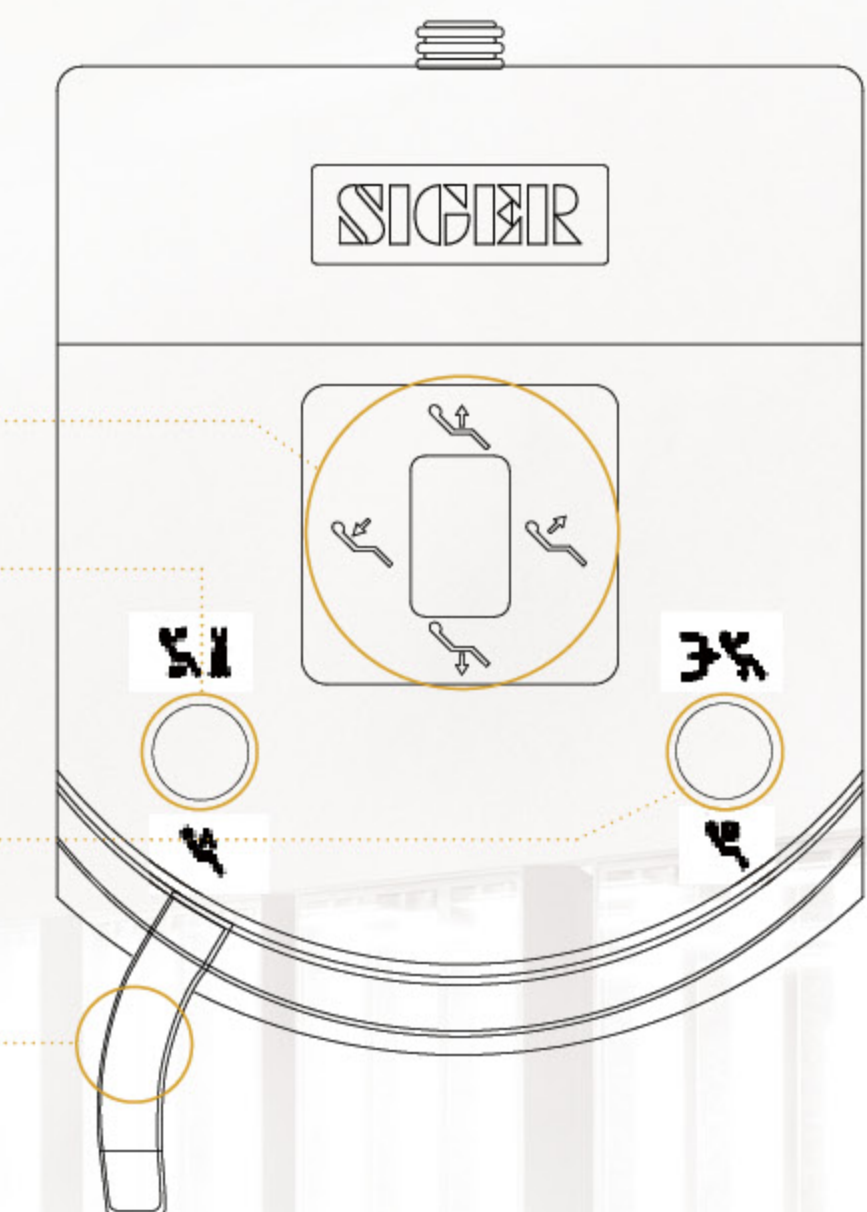
Dynamic instruments speed control

Chair position adjustment

Spittoon position/Preset position A/ Dynamic instruments working with/without water

Zero position/ Preset position B/ Chip blow

Dynamic instruments working control



ASSISTANT ELEMENT

Powerful touch control panel for assistant

The on and off of all the instruments are controlled by photoelectric sensor system

HV suction system with anti-backflow function.

Suction tubes and handles can be easily detached and disinfected.



EASILY CARRY OUT BY
MULTIFUNCTIONAL FOOT PEDAL:

- Automatical access to preset chair position
- Automatical access to preset spittoon position
- Automatic ON/OFF of operating light
- Automatic spittoon rinse
- Automatic cup filling
- Intelligent return to the previous position
- Adjustable chair positions
- Dynamic instruments speed control
-

Chair position adjustment

Spittoon position/Program position A

Previous treatment position/ Preset position B

Dynamic instruments work with/without water

Handpiece chip blow

Dynamic instruments working control



SIGER U100

STANDARD CONFIGURATION:

- Swing-type/ hanging-type dentist element
- Control panel for dentist
- Built-in intraoral X-ray film viewer
- Two 4-holes tubings for turbine
- One 4-holes tubing for air motor
- One 3-way syringe for dentist
- Control panel for assistant
- One 3-way syringe for assistant
- One hydraulic saliva ejector
- One pneumatic HV suction
- Patient chair of U100 type
- Multifunctional headrest
- Left armrest
- Balance arm with air lock system
- Multifunctional foot-pedal with program memory
- LED operating light
- Rotatable/detachable hygienic ceramic spittoon
- Distilled water system
- Cup filling system with warm water
- Dentist stool



Autoclavable silicon pad on instrument table.



Detachable ceramic spittoon and water letout for cleaning.



Detachable suction system for cleaning.



Distilled water/tap water switching system.

The height of the seat and backrest of dentist stool and the tilt of backrest can be adjusted to meet with ergonomics. Assistant stool is optional.



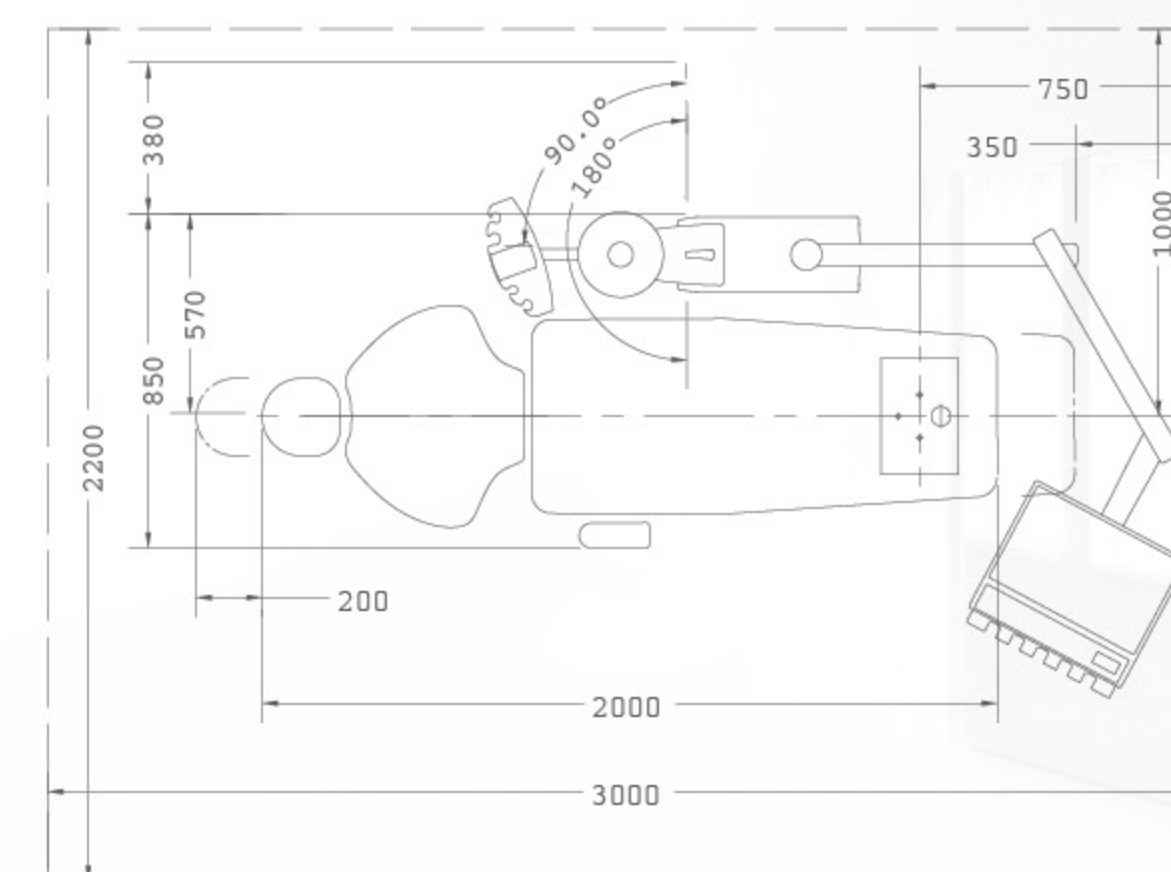
OPERATING LIGHT WITH SENSOR

Apply to leading-edge LED technology and combined with scientific optical system, VIEWDENT LED dental operation light designed to achieve the perfect lighting solution for dental treatment.

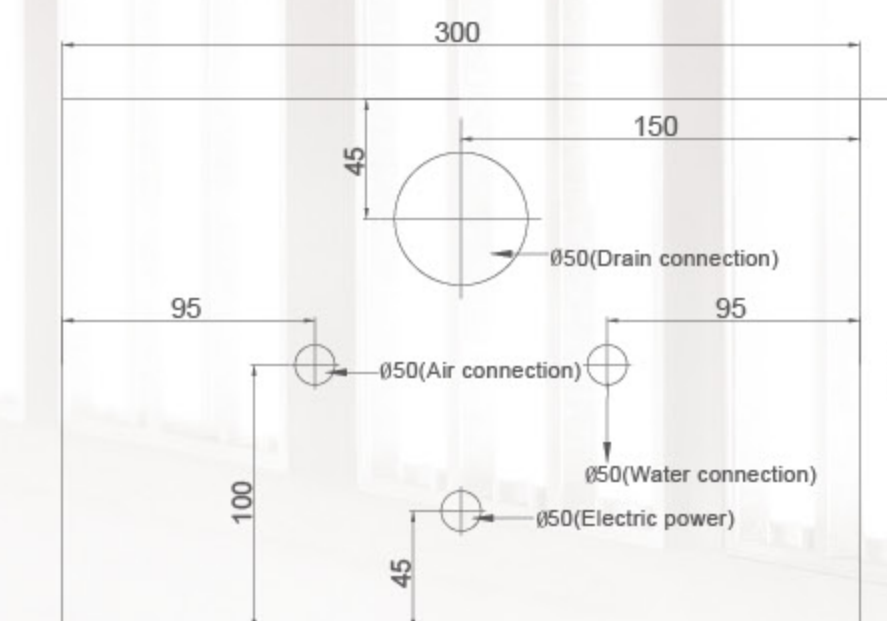
Illumination: 8000-30000LUX

Color Temperature: 4300°K

Spot Dimension:70×140MM(@700MM)



Dental Chair Size Chart



Layout of floor box holes

UPHOLSTERY COLOUR



U1# U2# U3# U4# U5# U6# U7# U8# U9# U10# U11# U12# U13#